

210 SERIES

Arguably the most versatile of all supply registers, the 210 Series Single Deflection register is available in a wide variety of configurations for almost any application. The highly effective open blade design and TRUAIRE's exclusive one piece frame allows for greater airflow. Our 210 Series is available with our unique SmoothGlide multi-shutter damper mechanism, a high quality opposed blade damper mechanism or without a damper.

Whether ceiling or sidewall, commercial or residential, these registers deliver high capacity airflow, style & solid construction.



Model 210H
Adjustable Horizontal Blades
No Damper
**NOTE: Not available in all sizes*

Model 210V
Adjustable Vertical Blades
No Damper

Model 210VM
Adjustable Vertical Blades
SmoothGlide Multi-Shutter Damper

Model 210HO
Adjustable Horizontal Blades
Opposed Blade Damper
**NOTE: Not available in all sizes*

Model 210VO
Adjustable Vertical Blades
Opposed Blade Damper

Compare to:

	210VM	210VO
Hart & Cooley	821	-
Shoemaker	951	951-O
USAire	1005VM	-
Continental	RGV	RGV-O
Lima	900V	90VOBD
Airmate	220V	200VO

Features

- Adjustable horizontal or vertical Airfoil blades
- Steel construction
- White powder-coat finish
- Unique beveled edges
- Recessed screw holes
- Variety of damper configurations Including: SmoothGlide multi-shutter
- Remarkable One-piece frame (Up to 14x10)

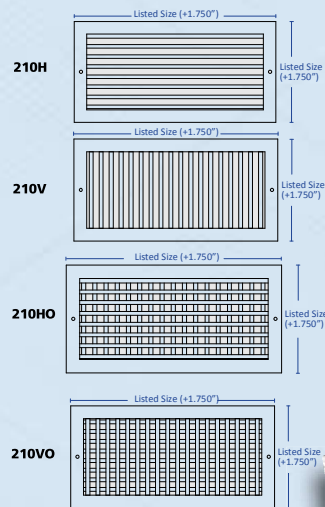
Product Detail



Beveled Edges One Piece Frame Construction

SmoothGlide Damper

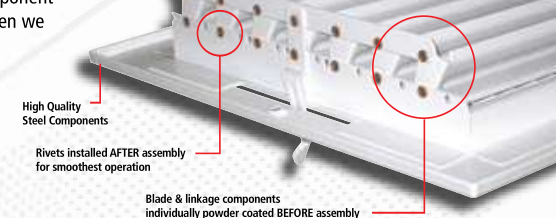
There is nothing like it on the market. Our SmoothGlide Damper prevents rust, rattling, and sticking. These dampers use high quality all-steel components. The idea behind this technology is that we powder coat the blade and the linkage component individually BEFORE we assemble our products and then we install the rivets to our blades.



NOTE:

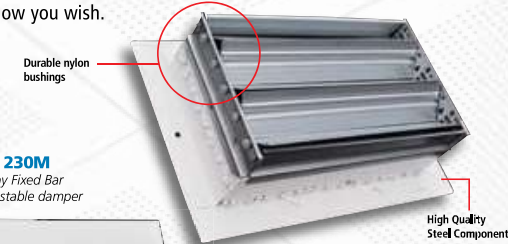
The Model 210 Series is available in over 60 sizes and configurations. For available sizes and current pricing please refer to our **Pricing Guide Supplement**.

210 Series Options



Opposed Blade Damper (OBD)

Top notch craftsmanship includes nylon bushings to ensure the blades stay in place according to the airflow you wish.



Model 230M
Three Way Fixed Bar with adjustable damper



ORDERING HINTS	DESCRIPTION	Example Model
1. Start with the base model	Model 210	210
2. Select the blade positioning	V = Vertical blades H = Horizontal blades	210V 210H
3. Select the damper configuration	M = Multi-shutter Damper (SmoothGlide) O = Opposed Blade Damper Blank = Without Damper	210VM 210VO 210V

Note: The 210VM is the most common and popular configuration.

A210 SERIES - Aluminum

Among the most versatile of all supply registers, the A210 Series Single Deflection register is available in a wide variety of configurations for almost any application. These registers feature an attractive and highly effective open blade design which allows increased airflow when compared to any stamped fin design. The single row of adjustable airfoil designed blades can be arranged horizontally or vertically.

Whether ceiling or sidewall, commercial or residential, these register delivers high capacity airflow, style & solid construction.



Model A210H

Adjustable Horizontal Blades
No Damper

*NOTE: Not available in all sizes



Model A210V

Adjustable Vertical Blades
No Damper



Model A210VM

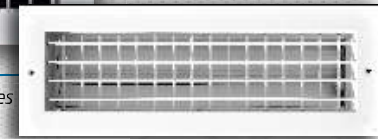
Adjustable Vertical Blades
SmoothGlide Multi-Shutter Damper



Model A210HO

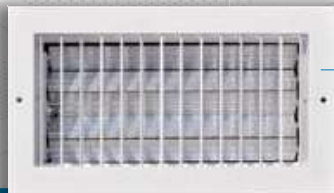
Adjustable Horizontal Blades
Opposed Blade Damper

*NOTE: Not available in all sizes



Model A210VO

Adjustable Vertical Blades
Opposed Blade Damper

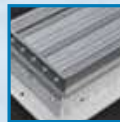


Compare to:	A210VM	A210VO
Hart & Cooley	A618MS	A618OB
Shoemaker	950	950-O
USAire	VM	VD
Continental	AVM	X
Lima	AL900V	AL990V/OBD
Airmate	A420-VM	AT420-VO

Features

- Adjustable horizontal or vertical Airfoil blades
- Aluminum construction
- White powder-coat finish
- Recessed screw holes
- Variety of damper configurations Including: SmoothGlide multi-shutter

Product Detail

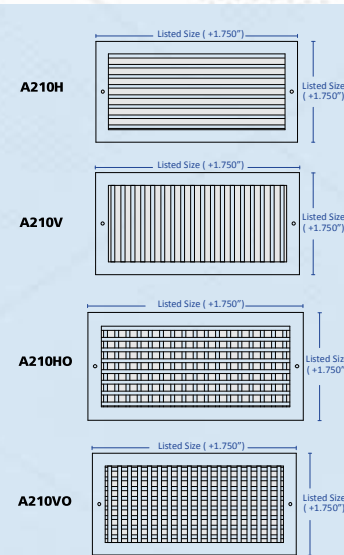


Durable Nylon Bushings

A210 Series Options

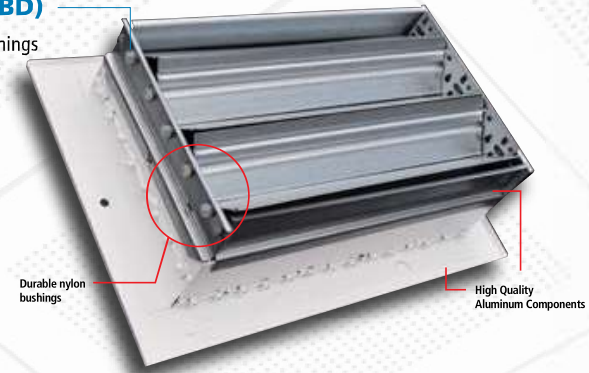
Opposed Blade Damper (OBD)

Top notch craftsmanship includes nylon bushings to ensure the aluminum blades stay in place according to the airflow that is desired.



NOTE:

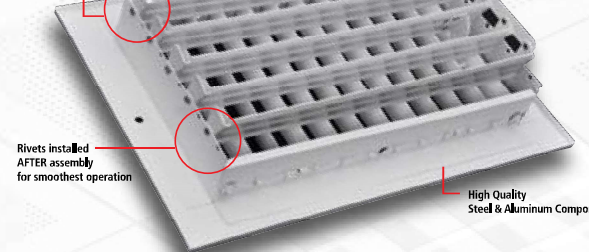
The Model A210 Series is available in over 60 sizes and configurations. For available sizes and current pricing please refer to our **Pricing Guide Supplement**.



SmoothGlide Damper

There is nothing like it on the market. Our SmoothGlide Damper prevents rust, rattling, and sticking. These dampers use high quality components. The idea behind this technology is that we powder coat the blade and the linkage component individually BEFORE we assemble our products and then we install the rivets to our blades.

Blade & linkage components individually powder coated BEFORE assembly



ORDERING HINTS	DESCRIPTION	Example Model
1. Start with the base model	Model A210	A210
2. Select the blade positioning	V = Vertical blades H = Horizontal blades	A210V A210H
3. Select the damper configuration	M = Multi-shutter Damper (SmoothGlide) O = Opposed Blade Damper Blank = Without Damper	A210VM A210VO A210V

Note: The A210VM is the most common and popular configuration.